

PRODUCT OVERVIEW

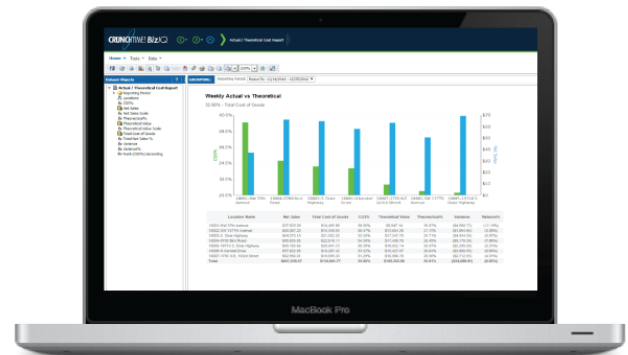
CRUNCHTIME! BIZIQ™ BUSINESS INTELLIGENCE & DATA WAREHOUSE SOLUTION

WHAT IS BIZIQ?

CrunchTime! BizIQ™ is an intelligent reporting tool that pulls Net-Chef data to a **separate** database and allows you to combine multiple metrics across different timelines to draw smart conclusions regarding the health of your business.

Here are some of the benefits that BizIQ provides:

- Quick and easy way to build custom reports and dashboards.
- Automatic delivery of the reports to multiple recipients' email after new data load.
- Condition based report alerts whenever it meets the criteria that you can define.



BizIQ exists to provide high-level analysis of your data over time. It is NOT intended to provide up-to-the-minute transactional reporting. Your Net-Chef database already provides that information.

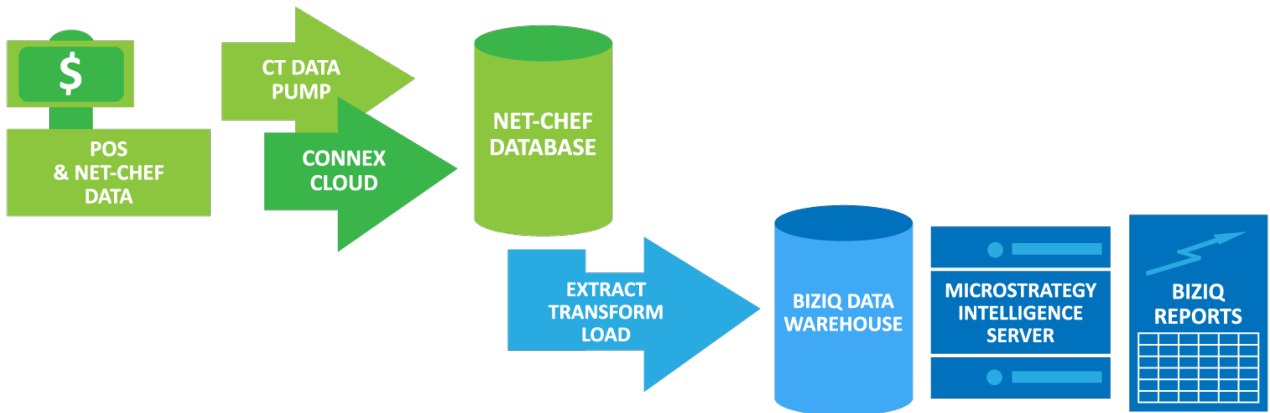
DATAFLOW

BizIQ uses Net-Chef as the data source but uses a **separate** data warehouse for its reporting. Every day, at a time chosen by the client, a data load (ETL) process brings data from Net-chef into BizIQ. At this point, a MicroStrategy tool is used to connect to that data and power-up BizIQ reports.

Important takeaways...

- If the data is not available in Net-Chef by the time the data gets picked up by the ETL, it won't be available in BizIQ.
- For any data that arrives in Net-Chef after the ETL start time, is available in BizIQ after the next ETL.
- BizIQ data warehouse holds 3 years of data at a time. Every ETL checks and brings over changes to data for past 30 days.

DATAFLOW



KEY TERMS IN BIZIQ

| TERM | DEFINITION | EXAMPLES |
|---------------------------|---|--|
| Attribute | Describes Data | GL, Product Number, Employee Name |
| Metric | Numerical Value | Sales, Theoretical Cost, Check Count |
| Derived Metric | New metric based on calculation of existing metrics | Avg. Sales per Guest = Net Sales/Guest Count |
| Filter | Applied to narrow the data to be retrieved or displayed. | Current plus last 3 weeks, Locations X, Y, Z. Can be attribute or metric. |
| Prompt | Filter asking user for Input | Can be Attribute or Metric that is part of the report i.e. Asking user to select locations |
| Report | Contains above mentioned objects | Typically displayed as columns and rows (grid format) Most reports run will be in this format |
| Document | Contains multiple reports as datasets | Use to Combine data in one place. Useful when different reports (Labor, Purchasing etc.) needs to be presented on a single screen. |
| Dashboard | Same as document but displays Visual representation of data | Combines different reports and represents the data in various graphical visualizations |
| Trending Metric | Data grouped by period (such as day by day, week by week, etc.) | Six weeks trend for Food Cost Variance. |
| Comparative Metric | Data retrieved for a period thru a reference date. Often compared to same time frame last year/last week/last month | Week to date Sales, Period to date Sales, Same day last year. Represented by metric names with DOB, WTD etc. etc. |

TYPES OF REPORTS AVAILABLE IN BIZIQ

There are four (4) types of report available in BizIQ:

1. Wizards



Wizard - Menu Mix

Owner: Administrator

Modified:

2/2/17 2:57:11 PM

Recipe sales and cost by a selected time period

With Wizards, users answer specific prompts for the report and receive results according to those answers. These provide the simplest way to model the report according to the users' requirement. Highly recommended for new users of BizIQ. These have the word "wizard" in the name as shown above.

2. Canned Reports



Employee Turnover Report

Owner: Administrator

Modified:

1/22/15 5:09:24 PM

Employee turnover metrics by a selected time period

These are reports without "wizard" as part of the name. With these reports, users typically answer a few prompts such as the Locations and Time ranges for the report. All other inputs are pre-built. These reports are designed for a specific set of metrics.

3. Documents



Menu Engineering by SubCategory

Owner: Administrator

Modified:

3/23/17 10:41:02 AM

Menu Engineering analysis (Stars, Puzzle, Cashcow, Dog) comparing products by SubCategory

Documents are same as Canned Reports, but they represent data from multiple reports. They usually contain some kind of analysis and are represented by a different icon as shown above.

4. Dashboards



Purchase & Consumption Dashboard

Owner: Administrator

Modified:

11/3/17 3:19:33 PM

Visual representation of various Purchase and Consumption metrics.

Dashboards are same as Documents, but these reports represent data with visualizations. They are represented by its own icon as shown above.

LICENSES

There are three levels for users in BizIQ and they have different sets of permissions as far as what they can do. The chart below represents the permissions for the three types of licenses.

| CRUNCHTIME BIZIQ FEATURES | POWER USER | ANALYST | CONSUMER |
|---|------------|---------|----------|
| REPORTS AND ANALYSES | | | |
| Create new reports, graphical analyses, and dashboards using the entire BizIQ platform | ● | | |
| Create new reports from the BizIQ Report Wizards | ● | ● | |
| Create new calculations and conditional thresholds based on metrics already on a base report | ● | ● | |
| Execute saved reports, graphical analyses, and dashboards | ● | ● | ● |
| Modify report layout elements such as row/column positions, number formats, totals, and filters | ● | ● | |
| Modify report format elements such as font size, borders, and highlighting | ● | ● | ● |
| Save personal default parameters for faster report retrieval | ● | ● | ● |
| Export reports and graphical analyses to Excel, HTML, PDF, CSV, or text format | ● | ● | ● |
| USER SECURITY | | | |
| View data for only the Locations/Ships to which the user has been granted access | ● | ● | ● |
| Save documents to user's personal folder and BizIQ archive | ● | ● | ● |
| SUBSCRIPTIONS | | | |
| Schedule automatic document subscriptions to BizIQ users and manage delivery time and format | ● | ● | |
| Create alert-based subscriptions to BizIQ users for when conditional thresholds are met | ● | ● | |
| Receive automatic document subscriptions via email or user's personal BizIQ archive | ● | ● | ● |
| CUSTOMIZATIONS | | | |
| Manage organization of company documents in BizIQ folders | ● | | |
| SUPPORT | | | |
| CrunchTime! BizIQ User Support | ● | | |
| CrunchTime! Training and Webinars | ● | ● | ● |

USING BIZIQ

1. Logging into BizIQ

BizIQ uses a single link for all clients so it's easy to remember. Users are directed to their proper data according to their username. The username is same as the Net-Chef username followed by *@clientid* and the password is same as the Net-Chef password. You can create and manage BizIQ users on your own.

2. Report and Objects Grouping Concept

Out-of-the-box reports (including wizards, canned, documents and dashboards) are grouped in 6 folders in BizIQ. This chart below explains what types of reports are found in which folders and which attributes and metrics works with these reports in case you want to edit and add those reports or create report from scratch.

| | Think of... | Net Chef Report Examples | Common Attribute Folders | Common Metrics Folders |
|-------------|--|--|---|--------------------------------------|
| Purchasing | Vendor Orders Product Detail Bid Master / Bid Information Bid Contracts Purchase by Invoice (PBI) Location Transfers Customer Orders | Bid Master Purchases by GL Recent Vendor Orders Booking Journal | Date Location Time Periods Hierarchy Product/Recipe Purchasing Product Detail Purchasing Summary Supplier Vendor PBI GL Qualitative Judgement Bid Location Transfer Customer Orders | Bid Purchasing Customer Orders |
| Consumption | Actual / Theoretical Variances Waste Inventory Inventory Adjustments | Actual / Theoretical Cost Report Adjustment Summary Current Inventory Extended Inventory Value | Date Location Time Periods Hierarchy Product/Recipe GL Location Transfer | Budget Consumption |
| Menu Mix | Product/Recipe Sales Sales by Server PMIX / Product Mix Menu Engineering Check-Level Detail | Menu Mix | Date Location Time Periods Time Interval Hierarchy Product/Recipe GL Revenue Center Daypart Check Customer Revenue Center | Menu Mix Sales Forecast |

| | | | | |
|-----------|---|--|--|-----------------------------------|
| Sales Mix | Gross Sales / Net Sales Comps / Discounts / Voids Cash Over / Short Book Cash Deposits Sales Forecast Budget | Sales Mix Sales Forecasting Budget | Date Location Time Periods Hierarchy Sales Mix Transaction Type GL Register | Budget Sales Mix |
| Labor | Payroll Employee Hours Labor Forecast | Payroll export Summarized Time Detail Summarized Labor Schedule metrics | Date Location Time Periods Hierarchy Employee Employee Audit Labor Pay Type Labor Position Labor Scheduled Shift Labor Wage Type Daypart GL | Budget Labor Sales Forecast |
| Tasks | Dashboard Tasks Task Audit | NC Dashboard Tasks | Date Location Time Periods Hierarchy Task Audit | Tasks Audit |

3. Instructions/Training

BizIQ offers various self-help documents and videos, as well as more in-depth advanced Training. We provide instructions for various functions you can do in BizIQ and how you can access the instructional videos. For the in-depth advanced training details, please reach out to your Customer Success Manager or CrunchTime Support (support@crunchtime.com.)